



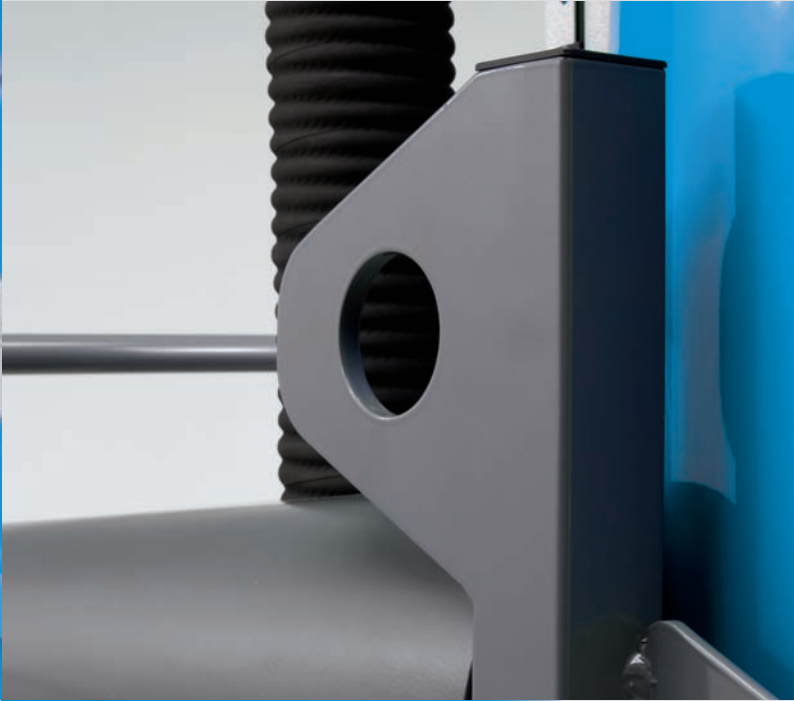
THE RIGHT VACUUM

Industrial vacuum cleaners





Kevac S.r.l.
Via Torquato Tasso n. 3/2
40050 Monteveglio (BO) Italy
Tel. / Fax +39 051 832 010
www.kevac.eu
info@kevac.eu



COMPANY & PRODUCTION



From initial start up in 2007, Kevac projects itself as a modern and reliable challenger in the design and manufacturing of industrial vacuum equipment suitable for cleaning and processing operations.

The range of products already includes a large number of models from 2 to 22 kW, available in various versions able to meet all market requirements, including models with **Atex** and **L-M-H** filtration certification, as well as a full and comprehensive range of accessories and optional items.

During the research and development stages of our machines, particular focus has been put on the following parameters:

- **Low noise** level
- **Ergonomics** for easy use and handling of the machines
- **Operator Safety**
- **Economy and optimisation** of power and performance.

Our know-how and experience permits us to offer customized solutions according to the end-users specific requirements and with the possibility to provide central vacuum cleaning and pneumatic conveying systems.

KM3

Single Phase



MULTIPURPOSE, MOBILE, WET AND DRY VACUUM CLEANER FOR GENERAL CLEANING OF INDUSTRIAL FACILITIES, WORKSHOPS, MACHINES.

Powerful, silent, robust: 3 kw soundproof vacuum unit including 3 high output self cooled motor -turbines. The extra power permits time saving in heavy-duty cleaning tasks. Recommended for vacuuming oily and heavy residues. It is very effective when vacuuming metal chips and lubricants

High filtering efficiency: hygienic star filter with large surface area ensures maximum vacuuming efficiency for long period of time when collecting very fine powders. Filter cleaning by ergonomic manual shaker. Absolute filtration and disposable bag supplied as options.

Convenient use and maintenance: a 90 litres capacity collection bin (50 litres available as option) with a quick and easy release system guarantees easy emptying. Compact and easy to handle.

Versatile: suitable for the vacuuming of fine dust, swarf, coolant and water residues. A multipurpose machine suitable for hundreds of applications in any type of industry.

Design: balanced and stylish giving a nice look to the machine.

TECHNICAL DATA

• Power	kW / HP	3 / 4
• Voltage	V / Hz	230 / 50÷60
• Maximum vacuum	mm H ₂ O	2.100
• Maximum air flow	L/min · m ³ /h	8.400 - 504
• Acoustic level	dB (A)	73
• Bin capacity	L	90 / 50
• Inlet diameter	Ø mm	70
• Overall dimensions	mm	690 x 660

• Star filter	Surface area	cm ² / m ²	19.500 / 1,95
	Class	-----	L
	Filter cleaning	ergonomic manual shaker	
• Absolute filter (HEPA) (Optional)	Surface	cm ² / m ²	28.000 / 2,8
	Class	-----	H14
	Efficiency M.P.P.S.	-----	99,995%
• Height		mm	1.450
• Weight		kg	62

OPTIONS

- **001** AISI 304 stainless steel container (instead of the painted one)
- **002** AISI 304 s.s. container and filtering chamber, (filter ring and lid as well)
- **004** Liquids switch off (includes sensor and specific electric box)
- **005** Absolute filter (HEPA)

Versions available with:

L-M-H filtration (for the vacuuming of toxic powders) certification. **L-M-H**

K4P

Three Phase

MULTIPURPOSE, MOBILE, WET AND DRY VACUUM CLEANER FOR:

- INTENSIVE GENERAL CLEANING OF INDUSTRIAL FACILITIES, WORKSHOPS, MACHINES
- CONTINUOUS VACUUMING FOR PROCESSING APPLICATIONS

Heavy duty, silent, robust, effective: fitted with a three phase, soundproof, maintenance free 4 kW vacuum unit. The high air flow performances of this model permits the use of large diameter hoses.

High filtering efficiency: hygienic star filter with large surface area ensures maximum efficiency for long period of time when vacuuming very fine dust. Filter cleaning by ergonomic manual shaker.

Modular: electric filter shaker with push-button, automatic filter cleaning with cartridge kit, absolute filtration and disposable bag are available as options.

Convenient use and maintenance: a 90 litres capacity collection bin with a quick and easy release system guarantees easy emptying. Compact and very stable.

Versatile: suitable for the vacuuming of fine dust, swarf, coolant and water residues. An effective solution for heavy duty industrial vacuuming needs.

Design: compact and attractive



TECHNICAL DATA

• Power	kW / HP	4 / 5,5
• Voltage	V / Hz	400 / 50 *
• Maximum vacuum	mm H ₂ O	3.000
• Maximum air flow	L/min · m ³ /h	8.500 - 510
• Acoustic level	dB (A)	72
• Bin capacity	L	50
• Inlet diameter	Ø mm	70
• Overall dimensions	mm	1.101 x 595

* other voltage are available up on request.

• Star filter	Surface area	cm ² / m ²	19.500 / 1,95
	Class	L
	Filter cleaning	ergonomic manual shaker **	
• Absolute filter (HEPA) (Optional)	Surface	cm ² / m ²	52.000 / 5,2
	Class	H14
	Efficiency M.P.P.S.	99,995%
• Height		mm	1.450
• Weight		kg	135

** electric filter shaker and automatic reverse jet cartridges filter cleaning as option.

OPTIONS

- 001 AISI 304 stainless steel container (instead of the painted one)
- 002 AISI 304 s.s. container and filtering chamber, (filter ring and lid as well)
- 004 Liquids switch off (includes sensor and specific electric box)
- 005 Absolute filter (HEPA)
- 006 Electric filter shaker with push button
- 008 Automatic reverse jet cartridge filtering system

Versions available with:

Atex (for use in explosive atmospheres or/and with explosive substances) and **L-M-H** filtration (for the vacuuming of toxic powders) certification.



L-M-H

KMB3

Single Phase



MULTIPURPOSE, MOBILE, WET AND DRY VACUUM CLEANER FOR GENERAL CLEANING OF INDUSTRIAL FACILITIES, WORKSHOPS, MACHINES

Powerful, silent, robust: 3 kw soundproof vacuum unit including 3 high output self cooled motor -turbines. The extra power permits time saving in heavy-duty cleaning tasks. Recommended for vacuuming oily and heavy residues. It is very effective when vacuuming metal chips and lubricants

High filtering efficiency: hygienic star filter with large surface area ensures maximum vacuuming efficiency for long period of time when collecting very fine powders. Filter cleaning by ergonomic manual shaker. Absolute filtration and disposable bag supplied as options.

Convenient use and maintenance: a 90 litres capacity collection bin (50 litres available as option) with a quick and easy release system guarantees easy emptying. Compact and easy to handle.

Versatile: suitable for the vacuuming of fine dust, swarf, coolant and water residues. A multipurpose machines suitable for hundreds of applications in any type of industry.

TECHNICAL DATA

• Power	kW / HP	3 / 4
• Voltage	V / Hz	230 / 50÷60
• Maximum vacuum	mm H ₂ O	2.100
• Maximum air flow	L/min · m ³ /h	8.400 - 504
• Acoustic level	dB (A)	73
• Bin capacity	L	90 / 50
• Inlet diameter	Ø mm	70
• Overall dimentions	mm	690 x 660

• Star filter	Surface area	cm ² / m ²	19.500 / 1,95
	Class	L
	Filter cleaning	ergonomic manual shaker	
• Absolute filter (HEPA) (Optional)	Surface	cm ² / m ²	28.000 / 2,8
	Class	H14
	Efficiency M.P.P.S.	99,995%
• Height		mm	1.450
• Weight		kg	61

OPTIONS

- **001** AISI 304 stainless steel container (instead of the painted one)
- **002** AISI 304 s.s. container and filtering chamber, (filter ring and lid as well)
- **004** Liquids switch off (includes sensor and specific electric box)
- **005** Absolute filter (HEPA)

Versions available with:

L-M-H filtration (for the vacuuming of toxic powders) certification. **L-M-H**

KB4P

Three Phase

MULTIPURPOSE, MOBILE, WET AND DRY VACUUM CLEANER FOR:
 - INTENSIVE GENERAL CLEANING OF INDUSTRIAL FACILITIES, WORKSHOPS, MACHINES
 - CONTINUOUS VACUUMING FOR PROCESSING APPLICATIONS

Heavy duty, silent, robust, effective: three phase 4 kW soundproof vacuum unit, without any wearing parts.

High filtering efficiency: hygienic star filter with large surface area ensuring maximum efficiency for long period of time when vacuuming very fine dust. Filter cleaning by ergonomic manual shaker.

Modular: electric filter shaker with push-button, automatic filter cleaning with cartridge kit, absolute filtration and disposable bag are available as an option.

Convenient use and maintenance: a 90 litres capacity collection bin with a quick and easy release system guarantees easy emptying. Compact and very stable.

Versatile: suitable for the vacuuming of fine dust, swarf, coolant and water residues. An effective solution to heavy duty industrial vacuum needs.



TECHNICAL DATA

• Power	kW / HP	4 / 5,5
• Voltage	V / Hz	400 / 50 *
• Maximum vacuum	mm H ₂ O	3.000
• Maximum air flow	L/min · m ³ /h	8.500 - 510
• Acoustic level	dB (A)	74
• Bin capacity	L	90
• Inlet diameter	Ø mm	70
• Overall dimensions	mm	994 x 650

* other voltage are available up on request.

• Star filter	Surface area	cm ² / m ²	19.500 / 1,95
	Class	L
	Filter cleaning	ergonomic manual shaker **	
• Absolute filter (HEPA) (Optional)	Surface	cm ² / m ²	52.000 / 5,2
	Class	H14
	Efficiency M.P.P.S.	99,995%
• Height		mm	1.398
• Weight		kg	129

** electric filter shaker and automatic reverse jet cartridges filter cleaning as option.

OPTIONS

- **001** AISI 304 stainless steel container (instead of the painted one)
- **002** AISI 304 s.s. container and filtering chamber, (filter ring and lid as well)
- **004** Liquids switch off (includes sensor and specific electric box)
- **005** Absolute filter (HEPA)
- **006** Electric filter shaker with push buton
- **008** Automatic reverse jet cartrige filtering system

Versions available with:

Atex (for use in explosive atmospheres or/and with explosive substances) and **L-M-H** filtration (for the vacuuming of toxic powders) certification.



TECHNICAL DATA								
Models		Power	Voltage	Maximum vacuum	Maximum air flow	Acoustic level	Container capacity	Material Inlet
		kW / HP	V / Hz	mmHg	L/min - m ³ /h	dB (A)	L	Ø mm
KM2	Single phase	2 / 2,7	230 / 50 ÷ 60	2.100	5.400 - 324	70	50 / 90	70
KM3		3 / 4	230 / 50 ÷ 60	2.100	8.400 - 504	73	90 / 50	70
KMB2		2 / 2,7	230 / 50 ÷ 60	2.100	5.400 - 324	70	50 / 90	70
KMB3		3 / 4	230 / 50 ÷ 60	2.100	8.400 - 504	73	90 / 50	70
K2	Three phase	2,2 / 3	400 / 50	3.100	5.166 - 310	70	90	70
K4P		4 / 5,5	400 / 50	3.000	8.500 - 510	72	90	70
K5P		4 / 5,5	400 / 50	3.200	8.500 - 510	72	90	70
K4S		4 / 5,5	400 / 50	4.900	5.100 - 310	71	90	70
KB2		2,2 / 3	400 / 50	3.100	5.166 - 310	73	90	70
KB4P		4 / 5,5	400 / 50	3.000	8.500 - 510	75	90	70
KB4S		4 / 5,5	400 / 50	4.900	5.166 - 310	73	90	70
KB4P/56		4 / 5,5	400 / 50	3.000	8.500 - 510	75	90	70
KB5P/56		5,5 / 7,5	400 / 50	3.200	8.500 - 510	75	90	70
K6		5,5 / 7,5	400 / 50	3.600	8.100 - 486	78	175	100
K7		7,5 / 10	400 / 50	4.200	13.500 - 810	78	175	100
K11P		11 / 15	400 / 50	3.600	15.300 - 918	78	175	100
K11S		11 / 15	400 / 50	5.200	8.100 - 486	78	175	100
K13		13 / 18	400 / 50	4.400	18.000 - 1.080	78	175	100
K15		15 / 20	400 / 50	4.000	19.166 - 1.150	78	175	100
K20S		22 / 30	400 / 50	6.200	18.600 - 1.116	78	175	100
K20P		22 / 30	400 / 50	4.400	36.000 - 2.160	78	175	100
		Compressed air consumption	Compressed air pressure required					
KC	Compressed air	3000 l / mn	4 ÷ 9 bar	4.500	6.800 - 408	75	50 / 90	70
KC2		6000 l / mn	4 ÷ 9 bar	4.500	13.600 - 816	78	90	70

VACUUM CLEANERS RANGE

TECHNICAL DATA

Overall dimensions	Height	Weight	Primary filter			Absolute Filter (Optional)		
			Surface	Class	Clean. system	Surface	Class	Efficiency M.P.P.S
mm	mm	kg	cm ² / m ²	---	---	cm ² / m ²	---	---
690 x 660	1.190	59	19.500 / 1,95	L	Ergonomic manual shaker	28.000 / 2,8	H14	99,995%
690 x 660	1.450	62	19.500 / 1,95	L		28.000 / 2,8	H14	99,995%
690 x 660	1.190	58	19.500 / 1,95	L		28.000 / 2,8	H14	99,995%
690 x 660	1.450	61	19.500 / 1,95	L		28.000 / 2,8	H14	99,995%
1.101 x 595	1.450	115	19.500 / 1,95	L	Ergonomic manual shaker	52.000 / 5,2	H14	99,995%
1.101 x 595	1.450	135	19.500 / 1,95	L		52.000 / 5,2	H14	99,995%
1.101 x 595	1.450	145	19.500 / 1,95	L		52.000 / 5,2	H14	99,995%
1.101 x 595	1.450	135	19.500 / 1,95	L		52.000 / 5,2	H14	99,995%
994 x 650	1.398	111	19.500 / 1,95	L	Ergonomic manual shaker	52.000 / 5,2	H14	99,995%
994 x 650	1.398	129	19.500 / 1,95	L	OPTIONS: 1	52.000 / 5,2	H14	99,995%
994 x 650	1.398	129	19.500 / 1,95	L	Electric filter shaker with push button	52.000 / 5,2	H14	99,995%
994 x 650	1.688	155	35.000 / 3,5	L	2 Automatic cleaning with cartridges kit	105.000 / 10,5	H14	99,995%
994 x 650	1.688	165	35.000 / 3,5	L		105.000 / 10,5	H14	99,995%
994 x 650	1.818	260	35.000 / 3,5	L		105.000 / 10,5	H14	99,995%
1.350 x 730	1.818	320	35.000 / 3,5	L		105.000 / 10,5	H14	99,995%
1.350 x 730	1.818	320	35.000 / 3,5	L		105.000 / 10,5	H14	99,995%
1.350 x 730	1.818	320	35.000 / 3,5	L		105.000 / 10,5	H14	99,995%
1.350 x 730	1.818	360	35.000 / 3,5	L	Electric filter shaker with push button	105.000 / 10,5	H14	99,995%
1.350 x 730	1.818	380	35.000 / 3,5	L		105.000 / 10,5	H14	99,995%
1.915 x 880	2.160	650	65.000 / 6,5	L	OPTIONS: Automatic cleaning with cartridges kit	105.000 / 10,5	H14	99,995%
1.915 x 880	2.160	705	109.000 / 10,9	L		105.000 / 10,5	H14	99,995%
680 x 660	1450	62	19.500 / 1,95	L	Ergonomic manual shaker	28.000 / 2,8	H14	99,995%
757 x 646	1450	62	35.000 / 3,5	L	OPTIONS: Automatic cleaning with cartridges kit	28.000 / 2,8	H14	99,995%



L-M-H

Models available with **Atex** (for use in explosive atmospheres or/and with explosive substances) and **L-M-H** filtration (for the vacuuming of toxic powders) certification.



Three phase K4P series.
Powerful yet compact and user friendly.
A highly efficient unit ideal for the ceramics industry and graphite or composite fine dust collection.



Workshop and warehouse floor cleaning.



Vacuuming of swarf and coolant.



Machine tool cleaning.

APPLICATIONS AND COMPONENTS



Simple release mechanism for bin emptying.



High efficiency large surface area filter.



Disposal plastic bag dust collection mechanism available.



Ergonomic and effective filter shaker.